



Using our high quality fine mesh cloth as a canvas, we prepare Yuzen-dyed works of art featuring a variety of motifs, including classics like Japanese four seasons, cute animals, and famous stories from around the world. Use our fuukin as placemats, handkerchiefs, or however else you'd like – the possibilities are endless. Why not add a little Japanese flavor to your life with our original SHIRAYUKI designs today!

Chlorine and oxygen bleach can be used on all Shirayuki Yuzen items if they become stained. This can help you keep your Shirayuki Yuzen looking newer and cleaner for a longer period of time.  
(Does not apply to the following 3 items: "Shirayuki Yuzen handkerchief", "Shirayuki Canvas Pochette" and "Shirayuki Canvas Bag".)

## Yuzen Dyeing Technique

The beautiful patterns of our fuukin are dyed into the cloth using the Yuzen technique. Named for its creator, Yuzensai Miyazaki, this traditional technique was invented in the middle of the Edo period (around 1700 A.D.) and has been used in all manners of Japanese textile production ever since.



## A Fusion of Nara and Kyoto

SHIRAYUKI FUUKIN are the product of a unique fusion of traditions from Japan's two ancient capitals. Special cotton cloth of Nara and the Yuzen dyeing technique from Kyoto combine to create an item representative of the crafts, art, and history of Japan.

## 白雪ふきん Shirayuki Fuukin

"Much more than just a cloth." SHIRAYUKI FUUKIN is a multi-purpose cloth made from high quality fine mesh cloth. The perfect mix of cotton and viscose makes this cloth highly durable and very soft. The fuukin will become softer with each use.



**Materials :** Cotton, Viscose  
**Size :** 30 × 35 cm  
(large) 30 × 45 cm

## 白雪ふきん麻入り Shirayuki Fuukin Asairi

Made from a fine blend of cotton, viscose, and a heat-resistant ramie, this cloth is extremely resistant and very smooth to the touch. Shirayuki Fuukin Asairi is perfect for cleaning your glassware or wiping the dishes. Since ancient times, it is widely believed that ramie possesses hidden magical powers that bring good luck and ward off unfortunate events.



**Materials :** Cotton, Viscose, Ramie  
**Size :** 30 × 35 cm  
(large) 30 × 45 cm

## 白雪彩ふきん Shirayuki Irodori Fuukin

This large-sized cloth made from a fine blend of cotton, viscose, and ramie is very thin and dries very quickly. They can be used as dishcloth, cheesecloth for cooking, or as a unique way to wrap gifts. Our special running stitch design represents growing prosperity. We create it for you with the hope that good luck will come your way from all directions.



**Materials :** Cotton, Viscose, Ramie  
**Size :** 57 × 57 cm

## 白雪友禅ふきん Shirayuki Yuzen Fuukin

Each Fuukin is Yuzendyed in a pretty pattern on one side and solid color on the other. Soft to the touch, Shirayuki Yuzen Fuukin absorbs like nothing you've ever seen. It is perfect for using as Oshibori, a moist hand towel. Oshibori is Japanese cultural hospitality of offering a hot or cold hand towel to a customer. They are perfect for cleaning hands before and after meals to give a refreshing feeling.



**Uses :** Oshibori, handkerchief, dishcloth – anything you can think of !



**Materials :** Cotton, Viscose  
**Size :** 30 × 40 cm

## 白雪友禅湯上りたおる Shirayuki Yuzen Yuagari Towel

Our bath towels have brilliant Yuzen patterns on the front, and a white mesh fabric for the back which allows air to pass better for fast and natural drying. Highly absorbent, it becomes softer after each use. They can be also use as summer blanket or baby cover.



**Materials :** Cotton, Viscose, ramie  
**Size :** 70 × 140 cm

## 白雪友禅手巾 Shirayuki Yuzen Shukin (Hand Cloth)

From ancient times, we Japanese have called hand cloths "Shukin". Both sides of our Shukin are dyed in different patterns using the artistic technique of Yuzen dyeing, making them reversible. We hope you will enjoy this unique aspect of our Shukin.



**Materials :** Cotton  
**Size :** 53 × 53 cm

## 白雪友禅はんかち Shirayuki Yuzen Handkerchief

Soft as silk and absorbent as a towel, this handkerchief can be used in many ways. Each handkerchief is reversible and has a solid-colored back to compliment its patterned front.



**Materials :** Cotton  
**Size :** 30 × 30 cm

## 白雪友禅てぬぐい Shirayuki Yuzen Tenugui

Each towel is Yuzen dyed in a pretty pattern on one side and a solid color on the other. They can be used in many different ways



**Materials :** Cotton, Viscose, ramie  
**Size :** 30 × 90 cm

## 白雪うるおいたおる Shirayuki Moisturizing Towel

This towel always retains 11% of its moisture, which gives it an exceptional moisture-retaining property and hydrates the skin perfectly. Ideal for women with sensitive skin, this towel cools and helps relieve fatigue.

**Uses :** As a warm towel, As a cool towel, For bathing, For baby bathing, For dry skin or dry hair



\* Warning! The towel loses its fluffy appearance when it gets wet, but this does not affect its use.



**Materials :** Viscose  
**Size :** 28 × 63 cm, (large) 28 × 73 cm

## 白雪帆布バッグ Shirayuki Canvas Bag

Our bags are made of 2-ply canvas and leather handles. They are spacious bags with 4 small inside pockets and 2 large inside pockets that can be used to keep your items separate. We guarantee that our bags are the best way to carry personal items, such as your cell phone, keys, and glasses, with you wherever you go.



**Materials :** Cotton  
**Size :** (small) W25 × H24 cm  
(medium) W30 × H27 cm  
(large) W40 × H34 cm

## 白雪帆布がまぐちポーチ Shirayuki Canvas Gamaguchi Pouch (Pochette)

Our Pochettes have wide mouth openings to grant you easy access to whatever is inside. They are easy to carry yet compact, and can hold all of your daily essentials. They can be used as a cosmetic pouch or a cell phone case. Even a digital camera or a battery charger can be safely stored inside thanks to our bags' Gamaguchi metal clip closures. Our bags' inner linings are made with a stain-resistant nylon.



**Materials :** Cotton  
**Size :** W16.5 × H9.5 × D10 cm

## 白雪友禅ポーチ Shirayuki Yuzen Pouch

The cushioning, soft polyester inside the lining provides your valuables the protection they deserve. Our quality pouches are easy to clean and hand washable.

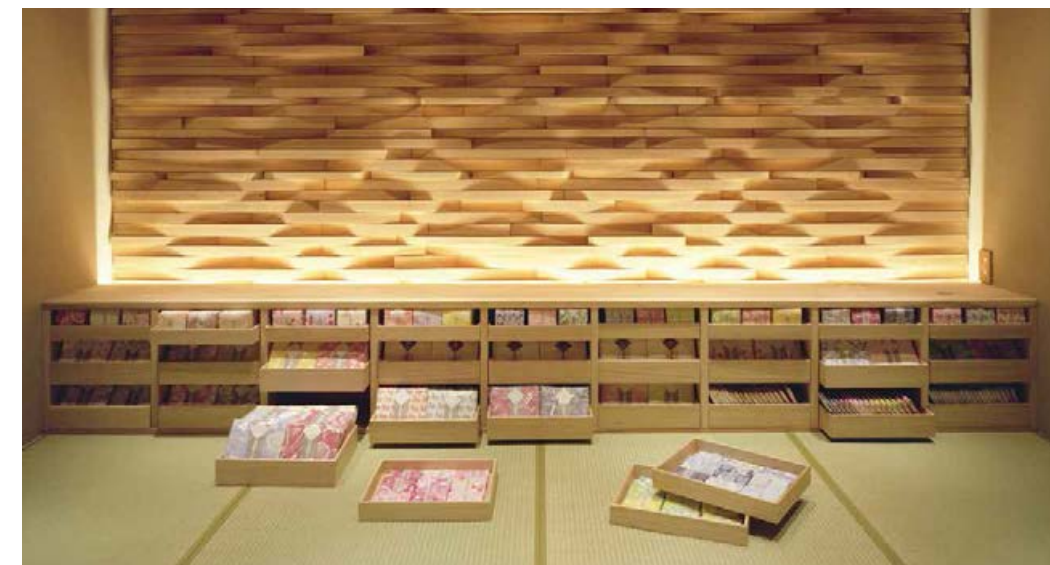
**Materials :** Cotton  
**Size :** W20 × H12 × D8 cm



## 白雪友禅シュシュ Shirayuki Yuzen Chouchou (Scrunchie)

Cute scrunchies featuring two pretty Yuzen patterns each. They are always guaranteed to keep your hair in place. We have a wide variety of colorful patterns available, making our scrunchies the perfect match for any outfit.

**Materials :** Cotton  
**Size :** a diameter of 14cm



5-85 Minamikidera-cho, Nara-shi, Nara-ken 630-8303, Japan  
<http://www.shirayuki-fukin.com>  
fb.com/shirayukifukin/ @shirayuki-fukin

We accept your Order Enquiries / Questions via E-mail only. Please feel free to contact us at support-en@shirayuki-fukin.com  
We shall return you promptly. (\*English / Japanese only)

## Special Features of SHIRAYUKI FUUKIN

- 1 Japanese Fine Mesh Cloth**  
This makes our hand made fuukin extremely absorbent and resistant to staining. SHIRAYUKI FUUKIN make for excellent cleaning cloths. Not only do they pick dirt up quickly and effectively, they also wash clean without any hassle.
- 2 Durable and Guaranteed to Last**  
SHIRAYUKI FUUKIN start as single pieces of fine mesh cloth that are stitched into 2-, 4-, 6-, or a sturdy 8-ply cloths.
- 3 Soft to the Touch**  
SHIRAYUKI FUUKIN are great for people with sensitive skin and babies. They're also great for make-up removal.
- 4 Environmentally Friendly**  
Our fuukin are resistant to stains and odor, making them ideal for long-term use.



**Please wash thoroughly in warm water by hand before the first use to remove any excess starch.**

We use natural sweet potato starch from Kagoshima. Soak in hot water with 40 degrees to let the starch soften. Rinse until the water comes out clean. Be sure to use hot water, as the starch is hard to remove with cold water.

**How to Care for SHIRAYUKI FUUKIN**  
• Use a laundry net when washing in a washing machine.  
• 30 degrees hand wash  
• Do not tumble dry. The dryer may cause shrinking.